



Ex-proof Lighting







Our innovative lighting solutions, integrated with the smart control systems we have developed and offered to consumers to date, have helped create efficient, safe and environmentally compatible facilities in hundreds of projects.

At a time when the possibilities offered by light and light-based technologies are constantly and rapidly evolving, we are aware of the important role that lighting plays in all areas concerning people and the environment. Therefore, we will continue to be a part of efficient, safe and sustainable environments.





What is a Zone?

It is the analysis of the risk and the classification of the zone based on the level of risk in the facilities where explosive, flammable or combustible materials are produced and/or distributed.

It is examined in two separate categories:

1 - Zone Classification According to Gas Groups
(Zone 0, Zone 1, Zone 2)

2- Zone Classification According to Dust Groups
(Zone 20, Zone 21, Zone 22)

How to Identify a Zone?

Zone classification is performed based on type production specified in the IEC EN 60079-10-1 (Gas) and IEC EN 60079-10-2 (Dust) directives.

Definitions of Zones

Zone 0 : Areas where explosive gas is present continuously, for long periods or frequently

Zone 1 : Areas where explosive gas is likely to occur

Zone 2 : Areas where explosive gas occurs rarely or for a short time

Zone 20 : Areas where explosive dust is present continuously, for long periods or frequently

Zone 21 : Areas where explosive dust is likely to occur

Zone 22 : Areas where explosive dust occurs rarely or for a short time

What Is Protection Type?

Indicates the flame-proof enclosure type of the device to be used in the zone. There are many types of enclosures, depending on the specifications of the device.

How to Choose a Protection Type?

You can choose the most suitable protection type for your facility among the enclosure types specified in the IEC EN 60079-0 directive for Zone classification. Moreover, you can learn the content and scope of the directives issued for these types.



What Is an Explosion Group?

It is the determination and classification of the type of explosive, flammable or combustible material produced and/or transferred within the facility.

It is examined in two separate categories:

1-Gas Groups (IIA, IIB, IIC)

2-Dust Groups (IIIA, IIIB, IIIC)

Explosion Group

Typical Types of Gas and Dust

IIA : Methane, Ethane, Propane, Butane, Octane, Fuel Oil

IIB : Acrylic Nitrile, Ethylene, Ethylene Oxide

IIC: Hydrogen, Acetylene, Carbon Disulfide

IIIA : Insulating Powders (Plastic, cereals, etc.)

IIIB : Semiconductor Powders (Silicon, Zinc, etc.)

IIIC : Conductive Powders (Copper, Iron, Aluminum, Paint Powders etc.)

Note: Equipment in group IIB also provides protection against equipment in group IIA. Equipment in group IIC also provides protection against equipment in group IIA and IIB. Equipment in group IIIB also protects against equipment in group IIIA. Equipment in group IIIC also protects against equipment in groups IIIA and IIIB.

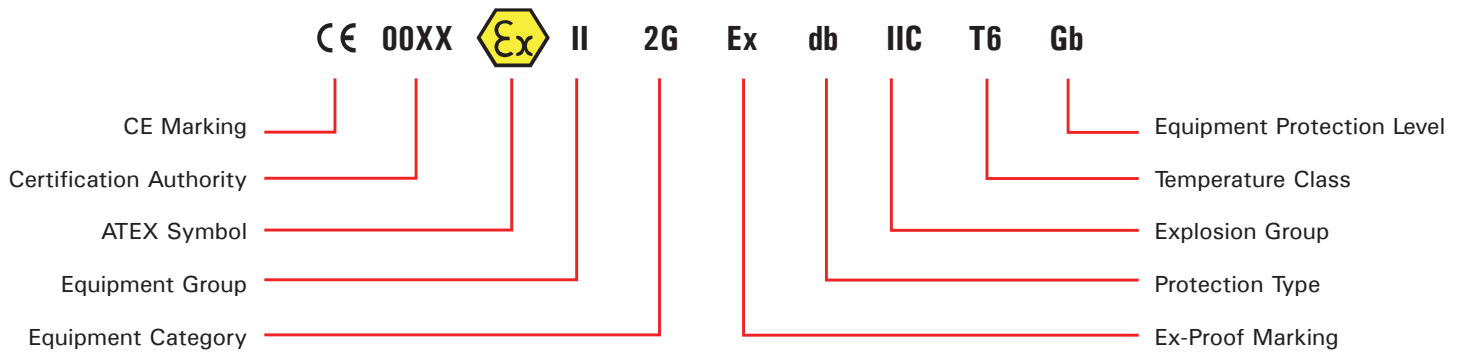
What Is a Temperature Class?

Indicates maximum surface temperature that can occur on the equipment. The determined temperature class should not approach the determined value at a critical level since it is the most important factor triggering the explosion of the liquid, gas or dust material in the area.

Definitions of Temperature Classes

| | |
|----|--|
| T1 | : Maximum surface temperature is lower than 450 °C |
| T2 | : Maximum surface temperature is lower than 300 °C |
| T3 | : Maximum surface temperature is lower than 200 °C |
| T4 | : Maximum surface temperature is lower than 135 °C |
| T5 | : Maximum surface temperature is lower than 100 °C |
| T6 | : Maximum surface temperature is lower than 85 °C |

ATEX INFORMATION GUIDE

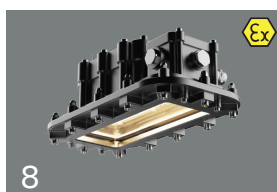


COMPREHENSIVE SOLUTION ACROSS VARIOUS SECTORS



Zone-1 (Gas) Zone-21 (Dust)

Content



■ EX-LINE MINI ZONE-1.21



■ EX-FOR MINI ZONE-1.21



■ HBC EX ZONE-1.21



■ PRL EX ZONE-1.21



■ EX-FLEX

EX-LINE MINI ZONE-1.21

This equipment is an explosion-proof LED lighting fixture. It is protected by its “db” type flame-proof enclosure and “tb” type dust protection method for explosive dust atmospheres. It is designed for use in explosive gas atmosphere Zone 1 and explosive dust atmosphere Zone 21. The luminaire is constructed with an LED driver and LED chip panel, housed in an IP 66 enclosure with an “eb” type energy input terminal. All cable glands, breathing and drain devices, and terminal blocks are Ex certified. The size and appearance of each model are the same; the main difference is the rated power.

Ex-proof Product Features

| | |
|-----------------------------------|---|
| Zone | : Zone 1.21 / 2.21 / 2.22 |
| Group / Category | : II / 2GD |
| Protection Class | : db eb tb |
| Explosion Group | : IIC / IIIC |
| Maximum Surface Temperature Class | : T6 / T85°C |
| Certificate Code | : II 2G Ex db eb IIC T6 Gb II 2D Ex tb IIIC T85°C Db |

Mechanical Features

| | |
|---------------------|---|
| Housing | : Aluminum Injection Housing |
| Diffuser | : Tempered Glass |
| Sealing | : High Temperature Resistant Silicone Gasket and TPV Gasket |
| Gland (Inlet) | : 1 x M20 |
| Screws and Bolts | : AISI 316 Stainless Steel |
| IP | : IP66 |
| IK Protection Class | : IK10 |

Electrical and Optical Properties

| | |
|--------------------|---|
| Light Source | : MID POWER LED |
| Consumption Power | : 20W / 28W / 36W / 44W / 51W / 57W |
| Lumen | : 2600 lm / 3600 lm / 4600 lm / 5600 lm / 6300 lm / 7000 lm |
| Input Voltage | : 220-240V (50-60 Hz) |
| Colour Temperature | : 3000K / 4000K / 5000K / 5700K / 6500K |
| CRI | : ≥80 |
| Optic | : 100° |

Other Features

| | |
|------------------|--|
| Mounting Options | : Ceiling, Cable Tray, Pole, Chain Support |
| Housing Colour | : SW 306G (Smoked) |

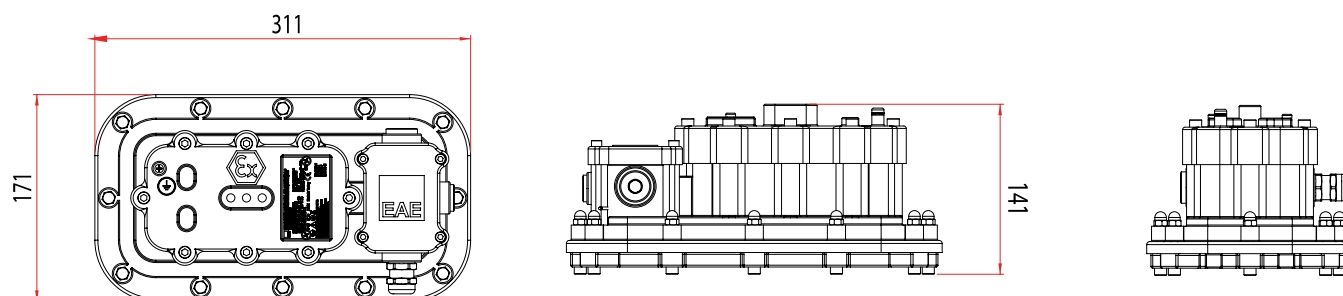
Options

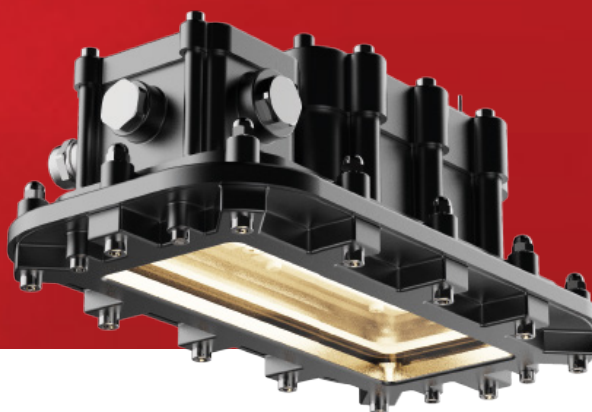
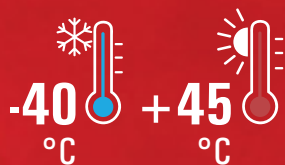
| | |
|-----------------|--|
| Grand Inlet | : M20, M25, NPT 3/4 and Armored Glands |
| Gland Output | : M20, M25, NPT 3/4 and Armored Glands |
| Protection Grid | : Yes |
| DALI | : Yes |
| TRW | : Yes |

Dimensions

| | |
|--------|----------|
| Width | : 171 mm |
| Length | : 311 mm |
| Height | : 141 mm |
| Weight | : 5.2 kg |

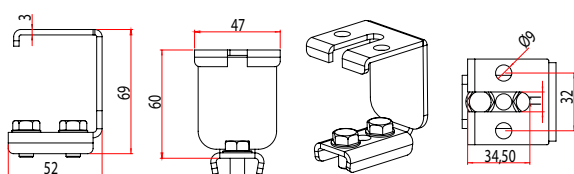
Technical Drawing (mm)





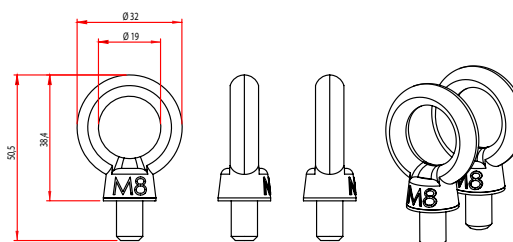
Mounting Tools

Cable Tray and Ceiling Hanger Kit



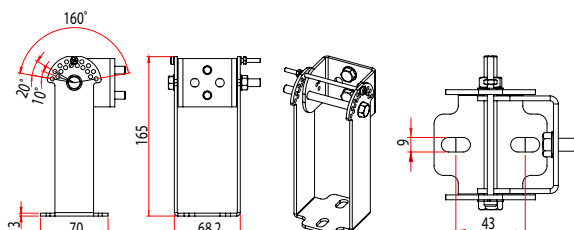
Order Code 3244478

M8 Eyebolt Hanger Kit



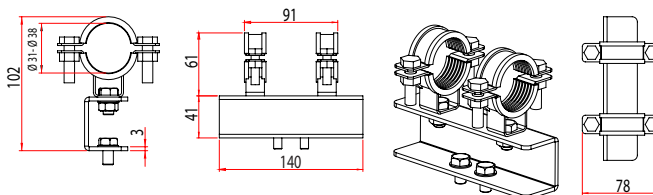
Order Code 3244480

Wall Installation - Installation with Angular Support



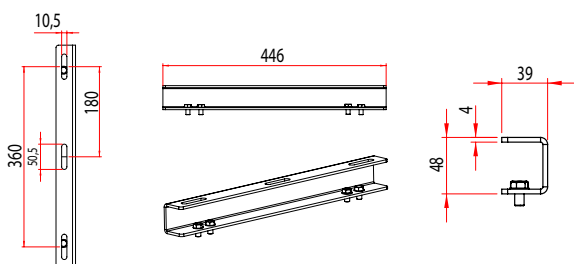
Order Code 3244499

Ø31 - Ø38 Pipe Installation



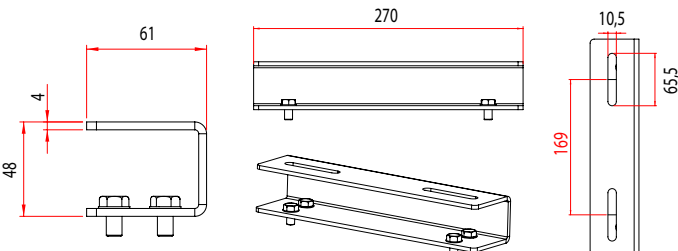
Order Code 3244500

Ceiling and Cable Tray Double Installation



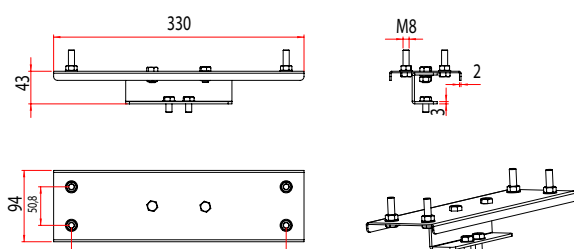
Order Code 3244501

Ceiling and Cable Tray Single Installation - 2



Order Code 3244505

Surface Hanger Kit



Order Code 3245127



Zone 1.21 / 2.21 / 2.22
II 2G Ex db eb IIC T6 Gb
II 2D Ex tb IIIC T85°C Db

EX-FOR MINI ZONE-1.21

The equipment is Explosion-proof Zone-1.21 LED luminaire. Type of protection flame-proof “db” for Explosive Gas Atmosphere Zone 1 and Type of protection “tb” for Explosive Dust Atmosphere Zone 21 have protection level. LEDs and driver are located in an IP66 protected enclosure. All cables, cable glands and terminal blocks are certified. The size and appearance of each model is the same. Their main differences are power and product features.

Ex-proof Product Features

| | |
|-----------------------------------|--|
| Zone | : Zone 1.21 / 2.21 / 2.22 |
| Group / Category | : II / 2GD |
| Protection Class | : db tb |
| Explosion Group | : IIC / IIIC |
| Maximum Surface Temperature Class | : T6 / T85° |
| Certificate Code | : II 2G Ex db IIC T6 Gb II 2D Ex tb IIIC T85°C Db |

Mechanical Features

| | |
|---------------------|---|
| Housing | : Aluminum Injection Housing |
| Diffuser | : Tempered Glass |
| Sealing | : High Temperature Resistant Silicone Gasket and TPV Gasket |
| Gland (Inlet) | : Standard 1 x M20 |
| Screws and Bolts | : AISI 316 Stainless Steel |
| IP | : IP66 |
| IK Protection Class | : IK10 |

Electrical and Optical Properties

| | |
|--------------------|---|
| Light Source | : MID POWER LED |
| Consumption Power | : 20W / 28W / 36W / 44W / 51W |
| Lumen | : 2387 lm / 3267 lm / 4126 lm / 4890 lm / 5540 lm |
| Input Voltage | : 220-240V (50-60 Hz) |
| Colour Temperature | : 3000K / 4000K / 5000K / 5700K / 6500K |
| CRI | : ≥80 |
| Optic | : 90° |

Other Features

| | |
|------------------|--------------------------------------|
| Mounting Options | : Ceiling, Cable Tray, Pole, Pendant |
| Housing Colour | : SW 306G (Smoked) |

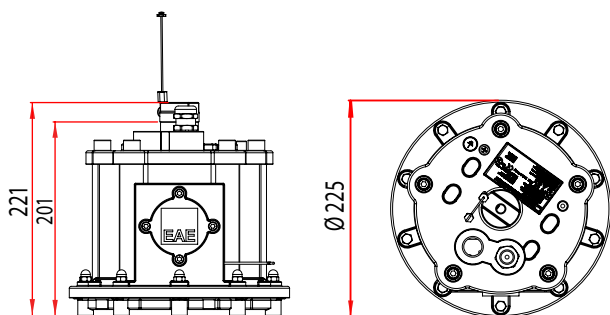
Options

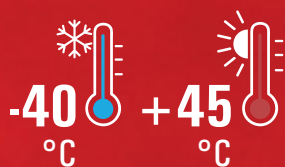
| | |
|-----------------|--|
| Grand Inlet | : M20, M25, NPT 3/4 and Armored Glands |
| Gland Output | : M20, M25, NPT 3/4 and Armored Glands |
| Protection Grid | : Yes |
| DALI | : Yes |
| TRW | : Yes |

Dimensions

| | |
|--------|-----------|
| Width | : Ø225 mm |
| Height | : 221 mm |
| Weight | : 5.5 kg |

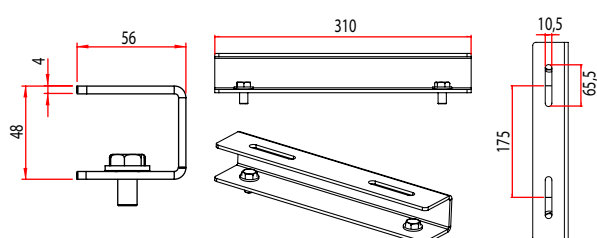
Technical Drawing (mm)





Mounting Tools

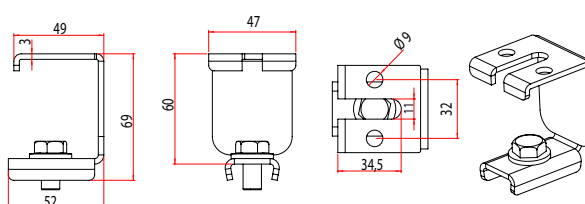
Dual Hanger Set



Order Code

3245782

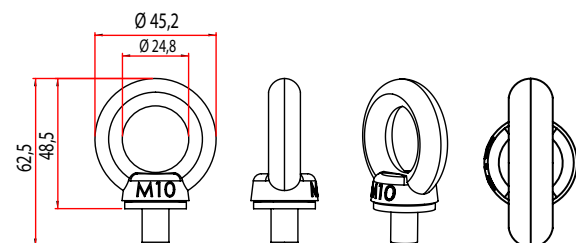
Cable Tray Hanger Set



Order Code

3245131

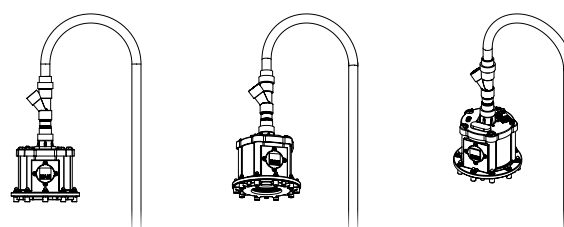
M10 Eyebolt Hanger Set



Order Code

3245137

Conduit Mounting



Zone 1.21 / 2.21 / 2.22

II 2G Ex db IIC T6 Gb

II 2D Ex tb IIIC T85°C Db

HBC EX ZONE-1.21

This equipment is an explosion-proof LED luminaire. It has “db, eb, mb” protection methods in explosive gas atmosphere (zone 1) and “tb” protection classes against dust ignition in explosive dust atmosphere (zone 21). The LEDs and driver are housed in an IP66 protected enclosure. All cables, plugs, glands and terminal blocks are Ex certified. The appearance of each model is identical, the main differences are the power ratings.

Ex-proof Product Features

| | |
|-----------------------------------|--|
| Zone | : Zone 1.21 / 2.21 / 2.22 |
| Group / Category | : II / 2GD |
| Protection Class | : db / eb / mb / tb |
| Explosion Group | : IIC / IIIC |
| Maximum Surface Temperature Class | : T6 / T85°C |
| Certificate Code | : II 2G Ex db eb mb IIC T6 Gb II 2D Ex tb IIIC T85°C Db |

Mechanical Features

| | |
|---------------------|---|
| Housing | : Aluminum Injection Housing |
| Diffuser | : Tempered Glass |
| Sealing | : Temperature Resistant Silicone Gasket |
| Gland (Inlet) | : 1 x M20 |
| Gland (Outlet) | : 1 x M20 |
| Screws and Bolts | : AISI 316 Stainless Steel |
| IP | : IP66 |
| IK Protection Class | : IK10 |

Electrical and Optical Properties

| | |
|--------------------|---------------------------------|
| Light Source | : MID POWER LED |
| Consumption Power | : 70W / 107W / 130W |
| Lumen | : 8388 lm / 12100 lm / 15100 lm |
| Input Voltage | : 220-240V (50-60 Hz) |
| Colour Temperature | : 4000K / 5000K / 6500K |
| CRI | : ≥ 85 |
| Optic | : 110° |

Other Features

| | |
|------------------|---|
| Mounting Options | : Ceiling, Cable Tray, Pole, Pendant |
| Housing Colour | : SW 306G (Smoked) |

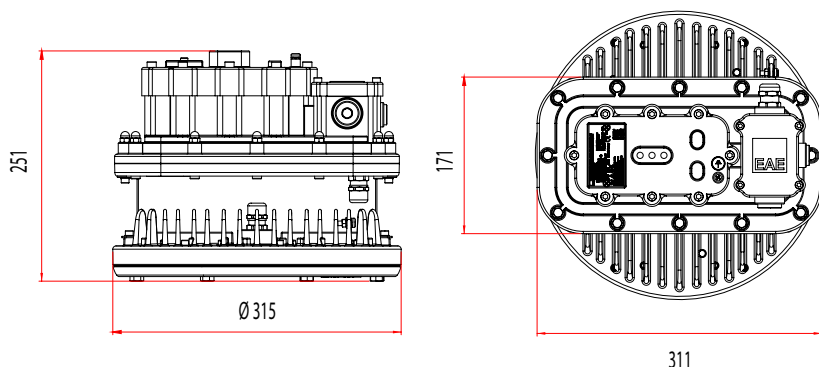
Options

| | |
|---------------|---|
| Grand Inlet | : M20, M25, NPT 3/4 and Armored Glands |
| Gland Output | : M20, M25, NPT 3/4 and Armored Glands |
| Emergency Kit | : Yes (1-3 Hours for 70W) |
| DALI | : Yes |
| TRW | : Yes |

Dimensions

| | |
|--------|------------------|
| Width | : Ø315 mm |
| Height | : 251 mm |
| Weight | : 10.1 - 10.9 kg |

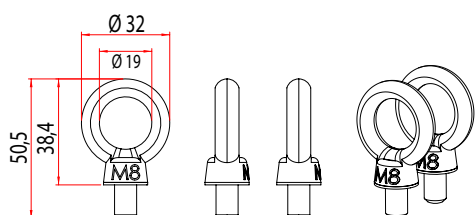
Technical Drawing (mm)





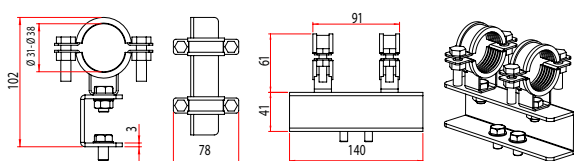
Mounting Tools

M8 Eyebolt Hanger Set



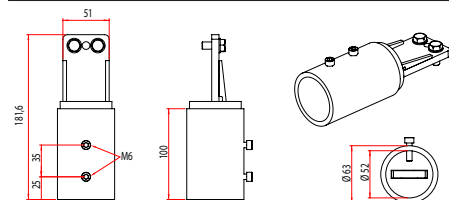
Order Code 3244480

Ø31 - Ø38 Pipe Installation



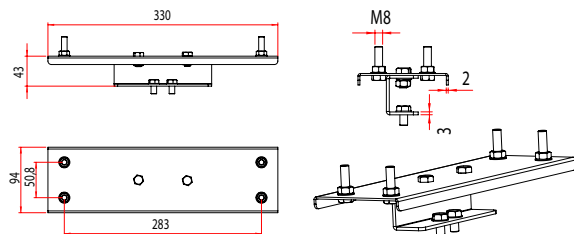
Order Code 3244500

Ø42 - Ø48 HBC-EX Z1 Pole Installation



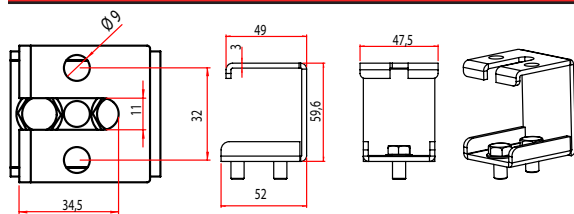
Order Code 3357953

Surface Hanger Set



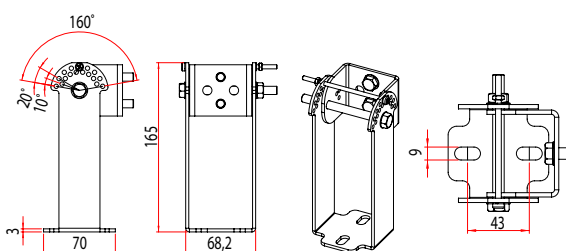
Order Code 3245127

Cable Tray and Ceiling Suspension Set



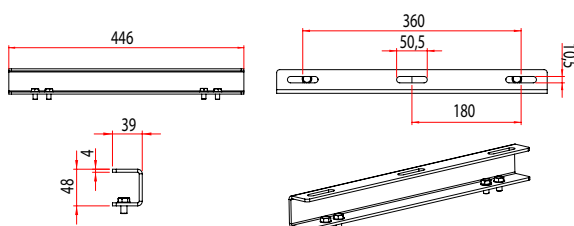
Order Code 3304454

Wall Installation - Installation with Angular Support



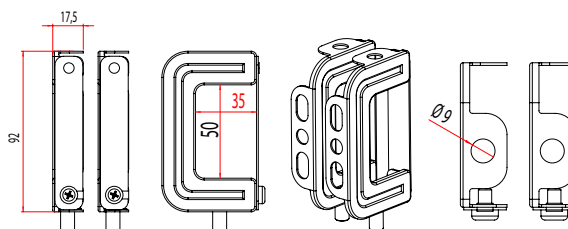
Order Code 3244499

Dual Product Hanging Set



Order Code 3244501

Box Profile Suspension Set



Order Code 3287129



Zone 1.21 / 2.21 / 2.22

II 2G Ex db eb mb IIC T6 Gb
II 2D Ex tb IIC T85°C Db

PRL EX ZONE-1.21

The equipment is Explosion-proof Zone-1.21 LED Luminaire. Type of protection “db, eb, mb” for Explosive Gas Atmosphere Zone 1 and Type of protection “tb” for Explosive Dust Atmosphere Zone 21 have protection level. LED driver and LED chips are panel in IP66 protection enclosure. All cables, cable glands and terminal blocks are certified. The size and appearance of each models are the same, mainly differences are the rated power.

Ex-proof Product Features

| | |
|-----------------------------------|--|
| Zone | : Zone 1.21 / 2.21 / 2.22 |
| Group / Category | : II / 2GD |
| Protection Class | : db / eb / mb / tb |
| Explosion Group | : IIC / IIIC |
| Maximum Surface Temperature Class | : T6 / T85°C |
| Certificate Code | : II 2G Ex db,eb,mb IIC T6 Gb II 2D Ex tb IIIC TXX°C Db |

Mechanical Features

| | |
|---------------------|---|
| Housing | : Aluminum Injection Housing |
| Diffuser | : Tempered Glass |
| Sealing | : Temperature Resistant Silicone Gasket |
| Gland (Inlet) | : 1 x M20 |
| Gland (Outlet) | : 1 x M20 |
| Screws and Bolts | : AISI 316 Stainless Steel |
| IP | : IP66 |
| IK Protection Class | : IK10 |

Electrical and Optical Properties

| | |
|--------------------|--|
| Light Source | : MID POWER LED |
| Consumption Power | : 70W / 82W / 107W / 130W |
| Lumen | : 9603 lm / 10986 lm / 13905 lm / 16072 lm |
| Input Voltage | : 220-240V (50-60 Hz) |
| Colour Temperature | : 4000K / 5000K / 6500K |
| CRI | : ≥ 85 |
| Optic | : 115° |

Other Features

| | |
|------------------|--------------------|
| Mounting Options | : Surface Mount |
| Housing Colour | : SW 306G (Smoked) |

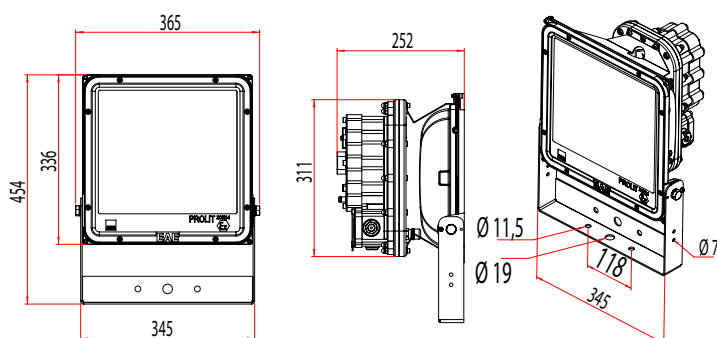
Options

| | |
|---------------|---|
| Emergency Kit | : Yes (1-3 Hours) (Only for 70W, 82W Products) |
| DALI | : Yes |
| TRW | : Yes |

Dimensions

| | |
|--------|------------------|
| Width | : 365 mm |
| Length | : 252 mm |
| Height | : 454 mm |
| Weight | : 13.5 - 14.4 kg |

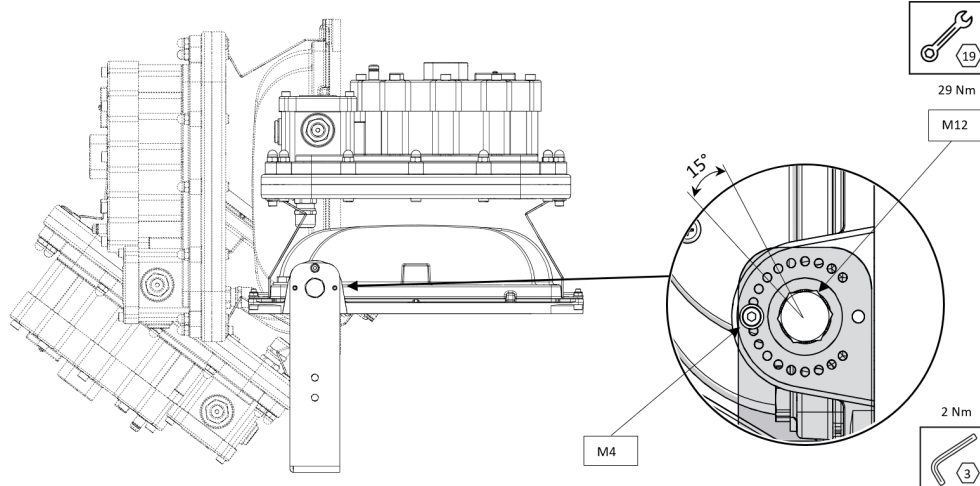
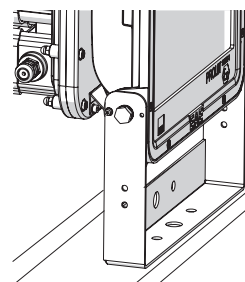
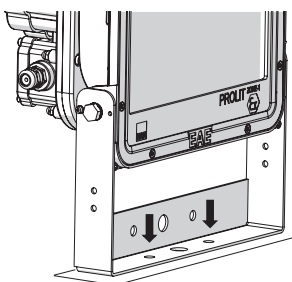
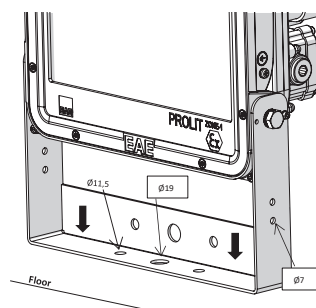
Technical Drawing (mm)



-30 °C +55 °C



Using Mounting Tools



Zone 1.21 / 2.21 / 2.22

II 2G Ex db,eb,mb IIC T6 Gb
II 2D Ex tb IIIC TXX°C Db

EX-FLEX

EX FLEX, which offers a multifunctional solution for emergency lighting and escape lighting, is suitable for use in Zone 1&21&2&22 zones that require durability with its high-strength body. It provides reliable illumination at ambient operating temperatures from -20 °C to +50 °C. With the EMG and tracable emergency kit option, it guarantees long-lasting use for harsh environmental conditions.

Ex-proof Product Features

| | |
|-----------------------------------|---|
| Zone | : Zone 1.21 / 2.21 / 2.22 |
| Group / Category | : II / 2GD |
| Protection Class | : db eb tb |
| Explosion Group | : IIC / IIIC |
| Maximum Surface Temperature Class | : T6 / T80°C |
| Certificate Code | : II 2G Ex db eb IIC T6 Gb II 2D Ex tb IIIC T80°C Db |

Mechanical Features

| | |
|---------------------|---|
| Housing | : Aluminum Injection Housing |
| Diffuser | : Borosilicate Tube Glass |
| Sealing | : Temperature Resistant Silicone Gasket |
| Gland (Inlet) | : 2x M20 |
| Gland (Outlet) | : 2x M20 |
| Screws and Bolts | : Stainless Steel |
| IP | : IP66 |
| IK Protection Class | : IK08 |

Electrical and Optical Properties

| | |
|--------------------|-----------------------|
| Light Source | : LED |
| Consumption Power | : 5W |
| Lumen | : 202 lm |
| Input Voltage | : 220-240V (50-60 Hz) |
| Colour Temperature | : 4000K |
| CRI | : ≥80 |
| Optic | : 120° |

Other Features

| | |
|------------------|--------------------------------|
| Mounting Options | : Ceiling, Pipe, Pendant, Wall |
| Housing Colour | : Gray Polyester |

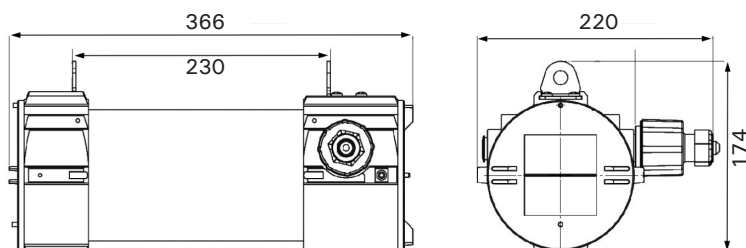
Options

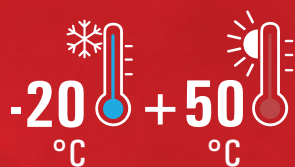
| | |
|---------------|-------------------|
| Emergency Kit | : Yes (1-3 Hours) |
|---------------|-------------------|

Dimensions

| | |
|------------------|----------|
| Width | : 220 mm |
| Length | : 366 mm |
| Height | : 174 mm |
| Hanger Set Width | : 230 mm |
| Weight | : 4 kg |

Technical Drawing (mm)





Mounting Tools

Pipe Installation



Ceiling Installation



Zone 1.21 / 2.21 / 2.22

Ex db IIC T6 Gb or
Ex db eb IIC T6 Gb (with adapter)
Ex tb IIIC T80°C Db



Contents



20

■ PROLIT KOMPAKT V3 EX ZONE-2.22



22

■ PROLIT V3 EX ZONE-2.22



24

■ HBC EX ZONE 2.21



26

■ CSD



28

■ DPE-EX ZONE-2.21



30

■ GALIS EX EXIT ZONE-2.21



Zone-2 (Gas)
Zone-21 (Dust)
Zone-22 (Dust)



■ GALIS EX-PROOF ZONE-2.21



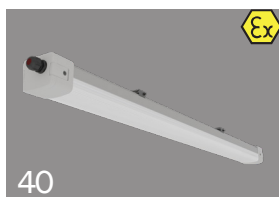
■ EX-COR ZONE-2.22



■ EX-DUAL EXIT ZONE-2.21



■ EX-DUAL ZONE-2.21



■ LINEX ZONE-2.21

PROLIT KOMPAKT V3 EX ZONE-2.22

This equipment is an explosion-proof LED luminaire. It has protection classes “ec” for increased safety in explosive gas atmosphere (zone 2) and “tc” for dust ignition in explosive dust atmosphere (zone 22). The LEDs and driver are housed in an IP66 protected enclosure. All cables, moisture plugs, glands and terminal blocks are Ex certified. The appearance of each model is identical, the main differences are the power ratings.

Ex-proof Product Features

| | |
|-----------------------------------|---|
| Zone | : Zone 2.22 |
| Group / Category | : II / 3GD |
| Protection Class | : ec / tc |
| Explosion Group | : IIC / IIIC |
| Maximum Surface Temperature Class | : T4 / T135°C |
| Certificate Code | : II 3G Ex ec IIC T4 Gc II 3D Ex tc IIIC T135°C Dc |

Mechanical Features

| | |
|---------------------|--|
| Housing | : Aluminum Injection Housing |
| Diffuser | : Tempered Glass & PC Lens |
| Sealing | : High Temperature Resistant Silicone Gasket |
| Gland (Inlet) | : 1 x M16 |
| Mounting Tools | : Internal Foot |
| Screws and Bolts | : AISI 316 Stainless Steel |
| IP | : IP66 |
| IK Protection Class | : IK09 |

Electrical and Optical Properties

| | |
|--------------------|---|
| Light Source | : HIGH POWER LED / MID POWER LED |
| Consumption Power | : 40W / 43W / 49W / 51W / 62W / 70W / 75W / 95W / 96W |
| Lumen | : 8128 lm / 7549 lm / 11366 lm / 11206 lm |
| Input Voltage | : 220-240V (50-60 Hz) |
| Colour Temperature | : 4000K / 5000K / 5700K / 6500K |
| CRI | : ≥ 70 / ≥ 80 |
| Optic | : High Power LED: 16° / 27° / 52° / 98° / ASM Mid Power LED: 35° / 60° / 90° |

Other Features

| | |
|------------------|-----------------------------|
| Mounting Options | : Ceiling, Cable Tray, Pole |
| Housing Colour | : MW 3004 (Black) |

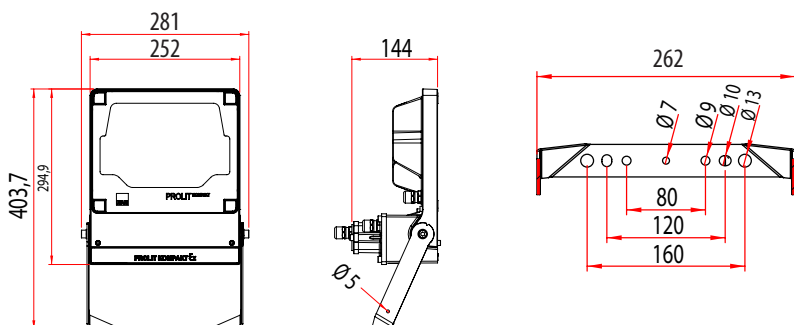
Options

| | |
|--------------|---|
| Grand Inlet | : M16, M20, M25, NPT 3/4 and Armored Glands |
| Gland Output | : M16, M20 and Armored Glands |
| TRW | : Yes |

Dimensions

| | |
|--------|----------------|
| Width | : 281 mm |
| Length | : 144 mm |
| Height | : 404 mm |
| Weight | : 5.1 - 5.3 kg |

Technical Drawing (mm)

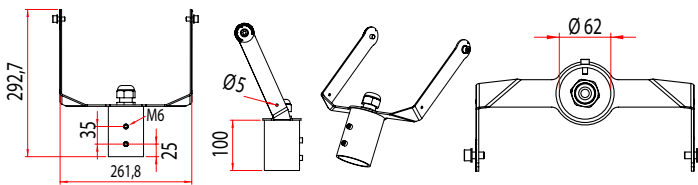


-20 °C +55 °C



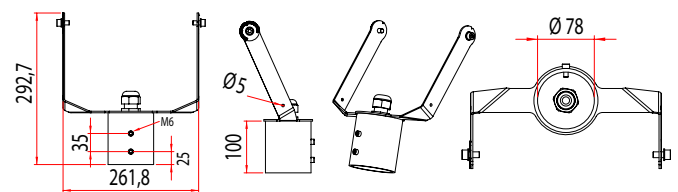
Mounting Tools

Ø60 Pole Installation



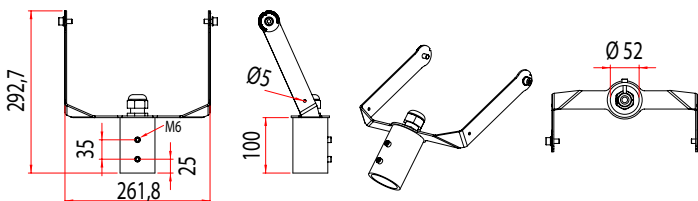
Order Code 3324097

Ø76 Pole Installation



Order Code 3345372

Ø42 - Ø48 Pole Installation



Order Code 3345367



Zone 2.22

II 3G Ex ec IIC T4 Gc
II 3D Ex tc IIIC T135°C Dc

PROLIT V3 EX ZONE-2.22

The equipment is an explosion proof LED Lighting Fixture. Protected by Increased Safety "ec" and Dust Ignition Protection by Enclosure "tc" purposed to used in Explosive Gas Atmosphere Zone 2 and Explosive Dust Atmosphere Zone 22. The luminaire constructed by LED driver and LED chips panel in the IP 66 enclosure. All the cable gland, breathing and drain device and terminal blocks are certified. The size and appearance of each models are the same, mainly differences are the rated power.

Ex-proof Product Features

| | |
|-----------------------------------|---|
| Zone | : Zone 2.22 |
| Group / Category | : II / 3GD |
| Protection Class | : ec / tc |
| Explosion Group | : IIC / IIIC |
| Maximum Surface Temperature Class | : T4 / T135°C |
| Certificate Code | : II 3G Ex ec IIC T4 Gc II 3D Ex tc IIIC T135°C Dc |

Mechanical Features

| | |
|---------------------|--|
| Housing | : Aluminum Injection Housing |
| Diffuser | : Tempered Glass |
| Sealing | : High Temperature Resistant Silicone Gasket |
| Gland (Inlet) | : 1 x M16 |
| Mounting Tools | : Internal Foot |
| Screws and Bolts | : AISI 316 Stainless Steel |
| IP | : IP66 |
| IK Protection Class | : IK09 |

Electrical and Optical Properties

| | |
|--------------------|--|
| Light Source | : POWER LED |
| Consumption Power | : 102W / 132W / 150W / 176W / 206W |
| Lumen | : 14879 lm / 17000 lm / 19753 lm / 22585 lm / 25760 lm |
| Input Voltage | : 220-240V (50-60 Hz) |
| Colour Temperature | : 4000K / 5000K / 5700K / 6500K |
| CRI | : ≥ 70 |
| Optic | : 22° / 32° / 57° / 99° / AS |

Other Features

| | |
|------------------|-----------------------------|
| Mounting Options | : Ceiling, Cable Tray, Pole |
| Housing Colour | : MW 3004 (Black) |

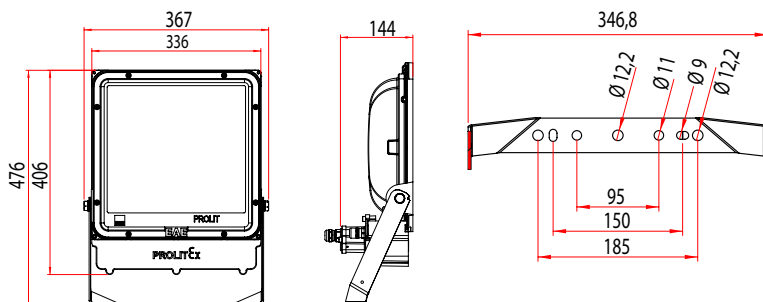
Options

| | |
|------------------|---|
| Grand Inlet | : M16, M20, M25, NPT 3/4 and Armored Glands |
| Gland Output TRW | : M16, M20 and Armored Glands : Yes |

Dimensions

| | |
|--------|----------|
| Width | : 367 mm |
| Length | : 476 mm |
| Height | : 144 mm |
| Weight | : 9 Kg |

Technical Drawing (mm)

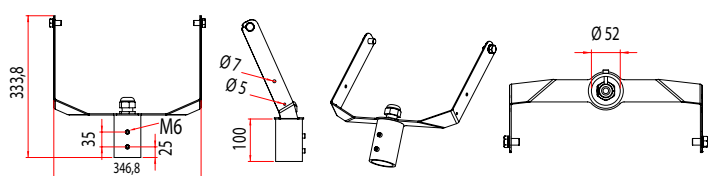


-20°C +55°C



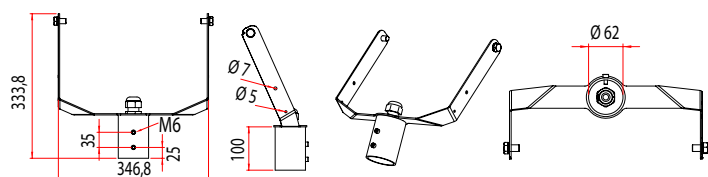
Mounting Tools

Ø42 - Ø48 Pole Installation



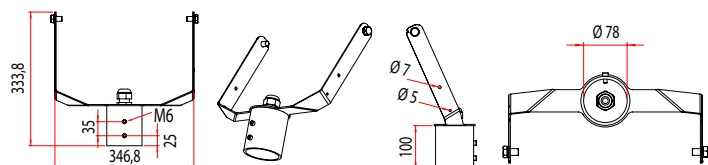
Order Code 3345373

Ø60 Pole Installation



Order Code 3345376

Ø76 Pole Installation



Order Code 3345377



Zone 2.22

II 3G Ex ec IIC T4 Gc
II 3D Ex tc IIIC T135°C Dc

HBC EX ZONE-2.21

This equipment is an explosion-proof LED luminaire. It has protection classes “nR” limited inhalation in explosive gas atmosphere (zone 2) and “tb” against dust ignition in explosive dust atmosphere (zone 21). The LEDs and driver are housed in an IP66 protected enclosure. All cables, plugs, glands and terminal blocks are Ex certified. The appearance of each model is identical, the main differences are the power ratings.

Ex-proof Product Features

| | |
|-----------------------------------|---|
| Zone | : Zone 2.21 / 2.22 |
| Group / Category | : II / 3G / 2D |
| Protection Class | : nR / tb |
| Explosion Group | : IIC / IIIC |
| Maximum Surface Temperature Class | : T5 / T95°C - T6 / T85°C |
| Certificate Code | : II 3G Ex nR IIC T6...T5 Gc II 2D Ex tb IIIC T80...T95°C Db |

Mechanical Features

| | |
|---------------------|--|
| Housing | : Aluminum Injection Housing |
| Diffuser | : Tempered Glass & PC Lens |
| Sealing | : High Temperature Resistant Silicone Gasket |
| Gland (Inlet) | : 1 x M16 |
| Screws and Bolts | : AISI 316 Stainless Steel |
| IP | : IP66 |
| IK Protection Class | : IK10 |

Electrical and Optical Properties

| | |
|--------------------|--|
| Light Source | : MID POWER LED |
| Consumption Power | : 75W / 98W / 115W / 154W / 181W / 197W |
| Lumen | : 8000 lm / 11470 lm / 13410 lm / 17517 lm / 19219 lm / 20125 lm |
| Input Voltage | : 220-240V (50-60 Hz) |
| Colour Temperature | : 2700K / 3000K / 4000K / 5000K / 5700K / 6500K |
| CRI | : ≥80 |
| Optic | : 50° / 80° |

Other Features

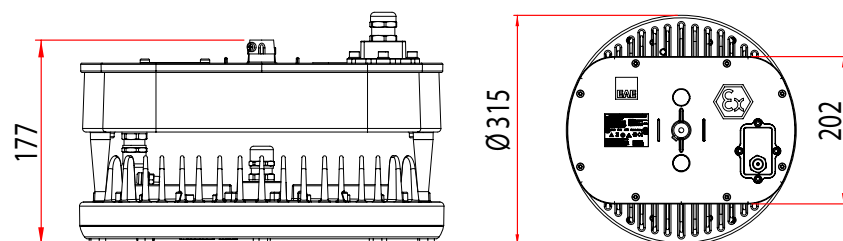
| | |
|------------------|---------------------------------|
| Mounting Options | : Ceiling, Cable Tray, Pendant, |
| Housing Colour | : SW 306G (Smoked) |

Options

| | |
|---------------|--|
| Grand Inlet | : M16, M20, M25, NPT 3/4 and Armored Glands |
| Gland Output | : M16, M20 and Armored Glands |
| DALI | : Yes |
| Emergency Kit | : Yes (1-3 Hours) (Only for 75W, 98W and 115W Products) |
| TRW | : Yes |

Dimensions

| | |
|--------|----------------|
| Width | : Ø315 mm |
| Height | : 177 mm |
| Weight | : 6.5 - 7.5 kg |

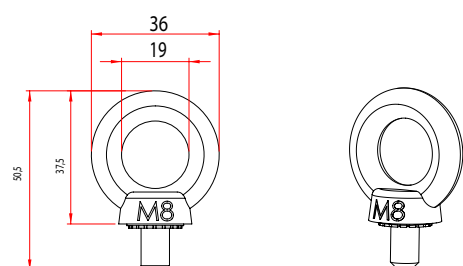


Technical Drawing (mm)



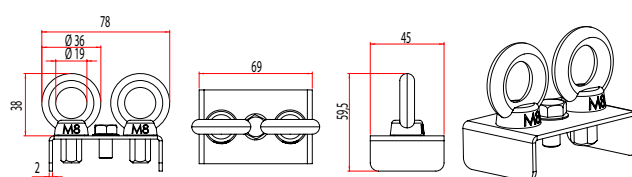
Mounting Tools

M8 Eyebolt (Single) Hanger Set



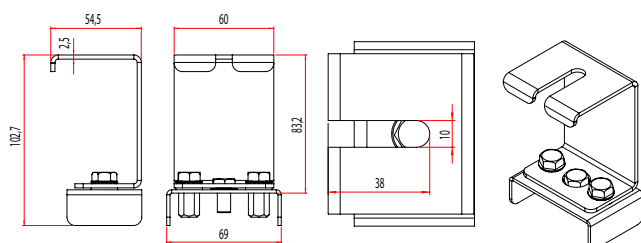
Order Code 3096325

M8 Double Eyebolt Hanger Set



Order Code 3224449

Emergency Kit Cable Tray Hanger Set



Order Code 3188240



Zone 2.21 / 2.22

II 3G Ex nR IIC T5,T6 Gc
II 2D Ex tb IIIC T80...T95°C Db

CSD

Cushldo is a luminaire designed for Zone 2.22. With its polycarbonate body, it guarantees a long service life by withstanding high impact and heat resistance. In addition to offering alternative suspension types and ACK option; it is budget friendly with its high efficient LED modules.

Ex-proof Product Features

| | |
|-----------------------------------|--|
| Zone | : Zone 2.22 |
| Group / Category | : II / 3GD |
| Protection Class | : nR / tc |
| Explosion Group | : IIC / IIIC |
| Maximum Surface Temperature Class | : T6 / T85° |
| Certificate Code | : II 3G Ex nR IIC T6 Gc II 3D Ex tc IIIC T85°C Dc |

Mechanical Features

| | |
|---------------------|--|
| Housing | : Polycarbonate Housing (PC) with High Mechanical Resistance |
| Diffuser | : Robust Polycarbonate Diffuser (PC) with High Mechanical Resistance |
| Sealing | : Polyurethane Cast Gasket |
| Gland (Inlet) | : Input Std. 1 x M20 |
| Screws and Bolts | : AISI 316 Stainless Steel |
| IP | : IP66 |
| IK Protection Class | : IK10 |

Electrical and Optical Properties

| | |
|--------------------|-----------------------|
| Light Source | : MID POWER LED |
| Consumption Power | : 42W / 73W |
| Lumen | : 6100 lm / 10100 lm |
| Input Voltage | : 220-240V (50-60 Hz) |
| Colour Temperature | : 4000K / 6500K |
| CRI | : ≥80 |
| Optic | : 120° |

Other Features

| | |
|------------------|---|
| Mounting Options | : Ceiling, Wall, Cable Tray, Angular, Pendant |
| Housing Colour | : RAL 9002 (Grey White) |

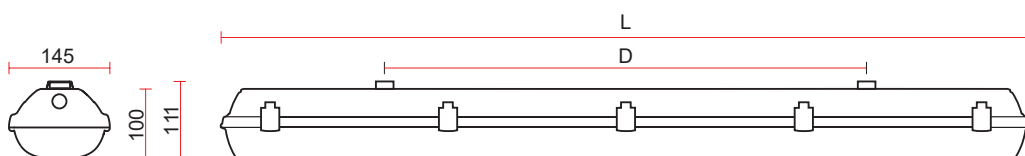
Options

| | |
|---------------|-------------------|
| Emergency Kit | : Yes (1-3 Hours) |
| DALI | : Yes |
| TRW | : Yes |

Dimensions

| | |
|----------------------|---------------------|
| Width | : 145 mm |
| Length (L) | : 1272 mm / 1572 mm |
| Hanger Set Width (D) | : 700 mm / 940 mm |
| Height | : 111 mm |
| Weight | : 3.2 - 4.4 kg |

Technical Drawing (mm)

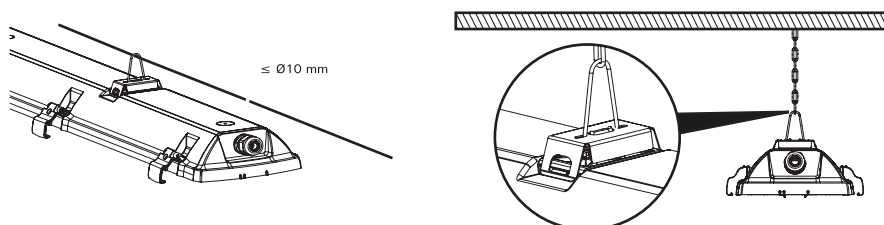


-25 °C +55 °C

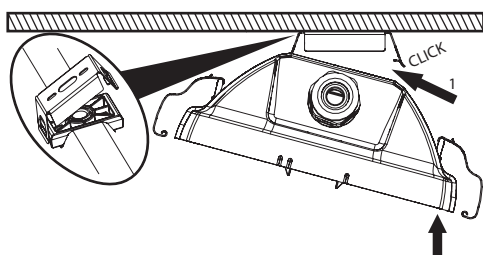


Mounting Tools

Wall Installation and Ceiling Support Installation



Ceiling and Wall / Angled Installation



Zone 2.22

II 3G Ex nR IIC T6 Gc
II 3D Ex tc IIIC T85°C Dc

DPE-EX ZONE-2.21

The equipment is an explosion proof LED Lighting Fixture. Protected “nR” and Dust Ignition Protection by Enclosure “tb” purposed to used in Explosive Gas Atmosphere Zone 2 and Explosive Dust Atmosphere Zone 21. The luminaire constructed by LED driver and LED chips panel in the IP 65 enclosure. All the cable gland, breathing and drain device and terminal blocks are Ex certified. The size and appearance of each models are the same, mainly differences are the rated power.

Ex-proof Product Features

Zone : Zone 2 / 21
Group / Category : II / 3G / 2D
Protection Class : nR / tb
Explosion Group : IIC / IIIC
Maximum Surface
Temperature Class : T6 / T75°C
Certificate Code : II 3G Ex nR IIC T6 Gc
II 2D Ex tb IIIC T75°C Db

Mechanical Features

Housing : Sheet Metal Body
Diffuser : Tempered Glass
Sealing : TPV Gasket
Gland (Inlet) : 1 x M16
Gland (Outlet) : 1 x M16
Screws and Bolts : IP65
IK Protection Class : IK07

Electrical and Optical Properties

Light Source : MID POWER LED

| D Type (Housing 1) | | | | | | |
|--------------------|------|------|------|------|------|------|
| W | 36 | 40 | 44 | 48 | 52 | 55 |
| Lm | 4398 | 4833 | 5268 | 5700 | 6131 | 6562 |

| V Type (Housing 2) | | |
|--------------------|-------|-------|
| W | 87 | 127 |
| Lm | 10000 | 14592 |

| Z Type (Housing 2) | | |
|--------------------|-------|-------|
| W | 87 | 127 |
| Lm | 10000 | 14592 |

| D Type (Housing 2) | | | | | | | | | | | | | | |
|--------------------|------|------|------|------|------|------|------|------|-------|-------|-------|-------|-------|-------|
| W | 59 | 63 | 67 | 71 | 73 | 75 | 79 | 83 | 87 | 91 | 97 | 103 | 105 | 113 |
| Lm | 6989 | 7414 | 7840 | 8262 | 8683 | 8800 | 9105 | 9522 | 10000 | 10600 | 11299 | 12000 | 12140 | 12976 |

*Consumption Power (W)

*Lumen (Lm)

Input Voltage : 220-240V (50-60 Hz)
Colour Temperature : 2700K / 3000K / 4000K / 5000K / 5700K / 6500K
CRI : ≥ 80
Optic : 120°

Options

Grand Inlet : M16, M20, M25, NPT 3/4 and Armored Glands
Gland Output : M16, M20 and Armored Glands
DALI : Yes
Emergency Kit : Yes (1-3 Hours)
Mounting Options : Wall Mounting
TRW : Yes

Other Features

Mounting Options : Sheet Metal Panel
Housing Colour : RAL 9016 (Traffic White)

Dimensions (mm)

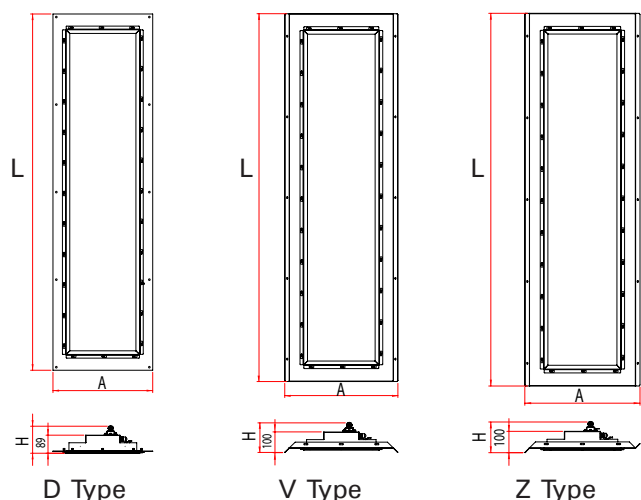
D Type
Width : 490
Length (L) : 1150 / 1750
Height : 134

V Type
Width : 490
Length (L) : 1754
Height : 147

Z Type
Width : 490
Length (L) : 1754
Height : 147

Weight : 19 - 23 Kg

Technical Drawings (mm)



-20 °C +45 °C



Zone 2.21 / 2.22

II 3G Ex nR IIC T6 Gc

II 2D Ex tb IIIC T75°C Db

GALIS EX EXIT ZONE-2.21

The equipment is an explosion proof LED Lighting Fixture. Type of protection "nR" and Dust Ignition Protection by Enclosure "tb" purposed to used in Explosive Gas Atmosphere Zone 2 and Explosive Dust Atmosphere Zone 21. The luminaire constructed by LED driver and LED chips panel in the IP 66 enclosure. All the cable gland, breathing and drain device and terminal blocks are Ex certified. It is an emergency lighting and guidance luminaire . It shows the direction of emergency escape with the direction signs on it.

Ex-proof Product Features

| | |
|-----------------------------------|--|
| Zone | : Zone 2.21 / 2.22 |
| Group / Category | : II / 3G / 2D |
| Protection Class | : nR / tb |
| Explosion Group | : IIC / IIIC |
| Maximum Surface Temperature Class | : T6 / T55°C |
| Certificate Code | : II 3G Ex nR IIC T6 Gc II 2D Ex tb IIIC T55°C Db |

Mechanical Features

| | |
|---------------------|--|
| Housing | : Aluminum Extrusion Body |
| Diffuser | : Tempered Glass |
| Sealing | : High Temperature Resistant Silicone Gasket |
| Rakor | : 1 x M20 |
| Screws and Bolts | : AISI 316 Stainless Steel |
| IP | : IP66 |
| IK Protection Class | : IK09 |

Electrical and Optical Properties

| | |
|--------------------|---|
| Light Source | : MID POWER LED |
| Consumption Power | : 5W |
| Lumen | : 629 lm |
| Input Voltage | : 220-240V (50-60 Hz) |
| Colour Temperature | : 2700K / 3000K / 4000K / 5000K / 5700K / 6500K |
| CRI | : ≥80 |
| Optic | : 120° |

Other Features

| | |
|------------------|--|
| Mounting Options | : Pipe, Angular, Box Profile, Pendant, Ceiling |
| Housing Colour | : SW0964 / RAL 9006 (Metallic Gray) |

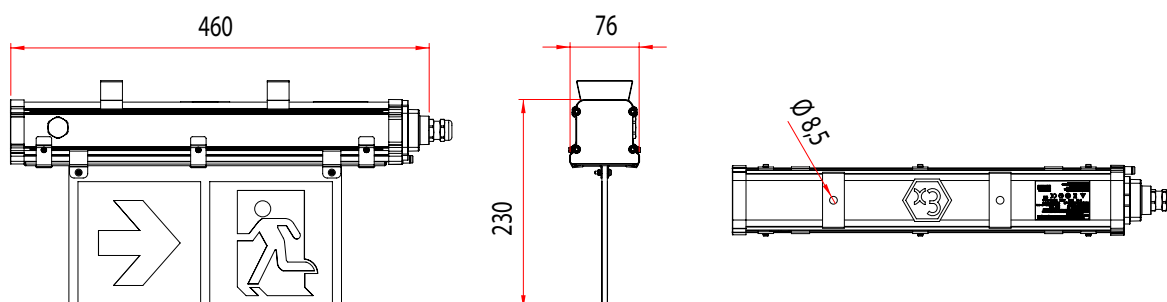
Dimensions

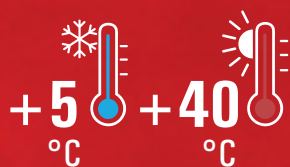
| | |
|--------|----------|
| Width | : 76 mm |
| Length | : 460 mm |
| Height | : 230 mm |
| Weight | : 2,1 kg |

Options

| | |
|---------------|--|
| Grand Inlet | : M20, M25, NPT 3/4 and Armored Glands |
| Emergency Kit | : Yes (1-3 Hours), Activated by Power Outage |
| TRW | : No |

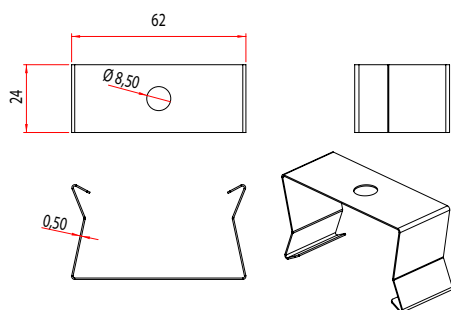
Technical Drawing (mm)





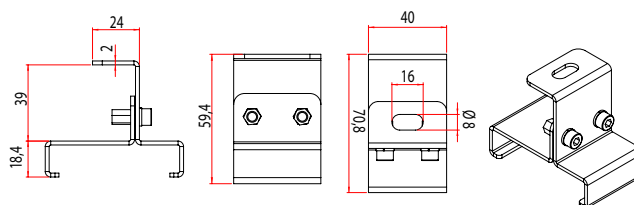
Mounting Tools

Hanger Spring



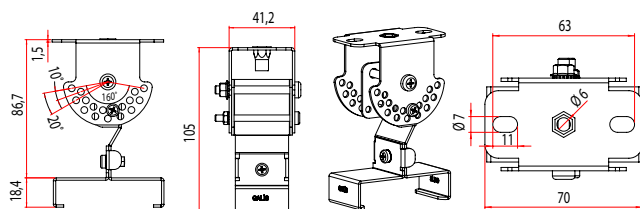
Order Code 1006876

Fixed Hanger Set (Double)



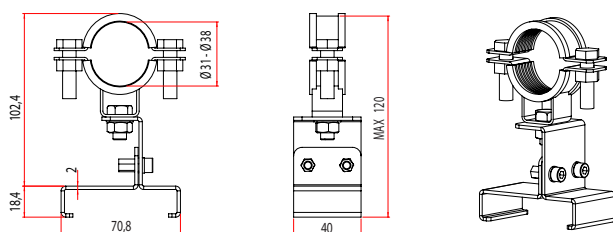
Order Code 3164773

Angled Hanger Set (Stainless)



Order Code 3236243

Ø31 - Ø38 Pipe Installation



Order Code 3290438



Zone 2.21 / 2.22

II 3G Ex nR IIC T6 Gc
II 2D Ex tb IIIC T55°C Db

GALIS EX-PROOF ZONE-2.21

The equipment is an explosion proof LED Lighting Fixture. Type of protection "nR" and Dust Ignition Protection by Enclosure "tb" purposed to used in Explosive Gas Atmosphere Zone 2 and Explosive Dust Atmosphere Zone 21. The luminaire constructed by LED driver and LED chips panel in the IP 66 enclosure. All the cable gland, breathing and drain device and terminal blocks are Ex certified. Product can also provide flexibility of lenght and power consumption values with its alluminum extrusion body.

Ex-proof Product Features

| | |
|-----------------------------------|--|
| Zone | : Zone 2.21 / 2.22 |
| Group / Category | : II / 3G / 2D |
| Protection Class | : nR / tb |
| Explosion Group | : IIC / IIIC |
| Maximum Surface Temperature Class | : T6 / T55°C |
| Certificate Code | : II 3G Ex nR IIC T6 Gc II 2D Ex tb IIIC T55°C Db |

Mechanical Features

| | |
|---------------------|--|
| Housing | : Aluminum Extrusion Body |
| Diffuser | : Tempered Glass |
| Sealing | : High Temperature Resistant Silicone Gasket |
| Gland (Inlet) | : 1 x M20 |
| Gland (Outlet) | : 1 x M20 |
| Screws and Bolts | : AISI 316 Stainless Steel |
| IP | : IP66 |
| IK Protection Class | : IK09 |

Electrical and Optical Properties

| | |
|--------------------|---|
| Light Source | : MID POWER LED |
| Consumption Power | : 19W / 23W / 28W / 37W / 55W / 70W |
| Lumen | : 2443 lm / 3158 lm / 4106 lm / 5208 lm / 7711 lm / 9716 lm |
| Input Voltage | : 220-240V (50-60 Hz) |
| Colour Temperature | : 2700K / 3000K / 4000K / 5000K / 5700K / 6500K |
| CRI | : ≥80 |
| Optic | : 120° |

Options

Other Features

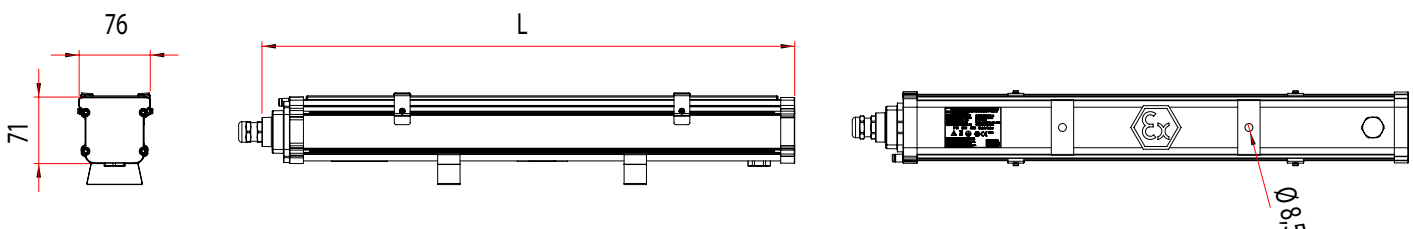
| | |
|------------------|---|
| Mounting Options | : Pipe, Angled, Profile, Pendant, Ceiling |
| Housing Colour | : SW0964 / RAL 9006 (Metallic Gray) |

| | |
|---------------|---|
| Grand Inlet | : M20, M25, NPT 3/4 and Armored Glands |
| Gland Output | : M20, M25, NPT 3/4 and Armored Glands |
| Emergency Kit | : Yes (1-3 Hours) Only (23W, 28W, 37W, 55W and 70W Products) |
| TRW | : Yes |

Dimensions

| | |
|-----------------|---------------------------------------|
| Width | : 76 mm |
| Length STD. (L) | : 566 mm / 886 mm / 1286 mm / 1528 mm |
| Length TRW (L) | : 595 mm / 915 mm / 1315 mm / 1557 mm |
| Height | : 71 mm |
| Weight | : 2,3 - 5,4 kg |

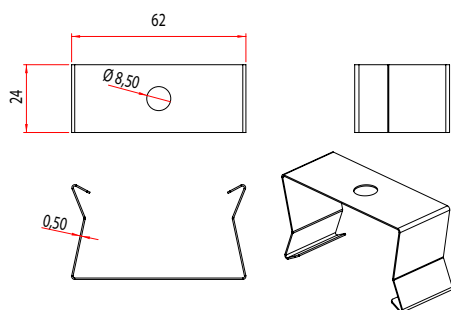
Technical Drawing (mm)





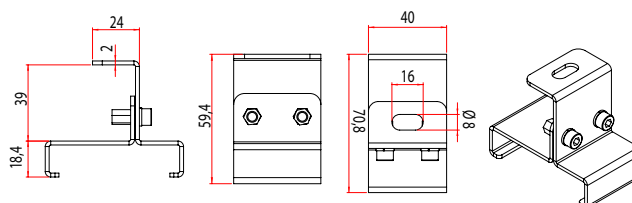
Mounting Tools

Hanger Spring



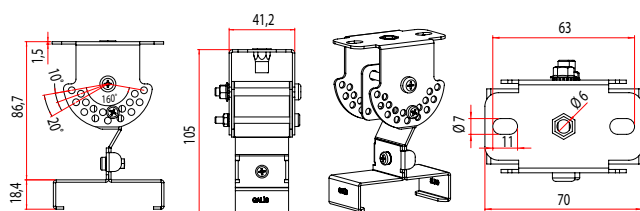
Order Code 1006876

Fixed Hanger Set (Double)



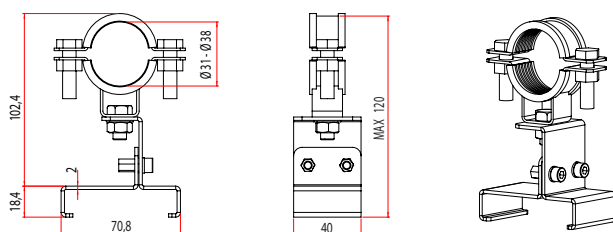
Order Code 3164773

Angled Hanger Set (Stainless)



Order Code 3236243

Ø31 - Ø38 Pipe Installation



Order Code 3290438



Zone 2.21 / 2.22

II 3G Ex nR IIC T6 Gc
II 2D Ex tb IIIC T55°C Db

EX-COR ZONE-2.22

The equipment is an explosion proof LED Lighting Fixture. Type of protection "nR" and Dust Ignition Protection by Enclosure "tc" purposed to used in Explosive Gas Atmosphere Zone 2 and Explosive Dust Atmosphere Zone 22. The luminaire constructed by LED driver and LED chips panel in the IP65 enclosure. All the cable gland, breathing and drain device and terminal blocks are Ex certified.

Ex-proof Product Features

| | |
|-----------------------------------|--|
| Zone | : Zone 2.22 |
| Group / Category | : II / 3GD |
| Protection Class | : nR / tc |
| Explosion Group | : IIC / IIIC |
| Maximum Surface Temperature Class | : T6 / T65°C |
| Certificate Code | : II 3G Ex nR IIC T6 Gc II 3D Ex tc IIIC T65°C Dc |

Mechanical Features

| | |
|---------------------|---|
| Housing | : GRP Body (Glass reinforced polyester) |
| Diffuser | : PC (Polycarbonate) Opal Diffuser |
| Sealing | : Polyurethane Casting Gasket |
| Gland (Inlet) | : 1x M20 Plastic Ex |
| Gland (Outlet) | : 1x M20 Plastic Ex |
| Screws and Bolts | : AISI 301 Stainless Steel |
| IP | : IP65 |
| IK Protection Class | : IK08 |

Electrical and Optical Properties

| | |
|--------------------|---|
| Light Source | : MID POWER LED |
| Consumption Power | : 29W / 40W / 51W / 60W / 72W / 81W |
| Lumen | : 3478 lm / 3453 lm / 5117 lm / 6487 lm / 7538 lm / 8961 lm / 9906 lm |
| Input Voltage | : 220-240V (50-60 Hz) |
| Colour Temperature | : 2700K / 3000K / 4000K / 5000K / 5700K / 6500K |
| CRI | : ≥80 |
| Optic | : 120° |

Other Features

| | |
|------------------|--------------------------------------|
| Mounting Options | : Ceiling, Wall, Cable Tray, Pendant |
| Housing Colour | : RAL 7035 (Grey) |

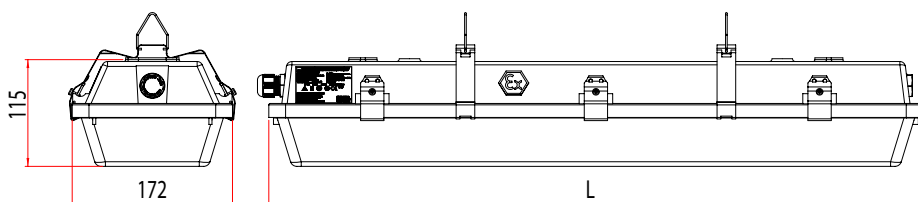
Options

| | |
|---------------|-------------------------------|
| Grand Inlet | : M20, M25 and Armored Glands |
| Gland Output | : M20, M25 and Armored Glands |
| DALI | : Yes |
| Emergency Kit | : Yes (1-3 Hours) |
| TRW | : Yes |

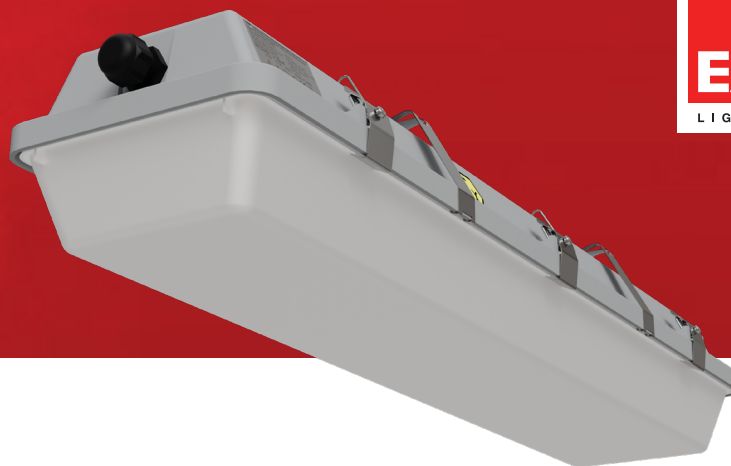
Dimensions

| | |
|------------|------------------------------|
| Width | : 172 mm |
| Length (L) | : 702 mm / 1312 mm / 1602 mm |
| Height | : 115 mm |
| Weight | : 2,6 - 4,3 kg |

Technical Drawing (mm)

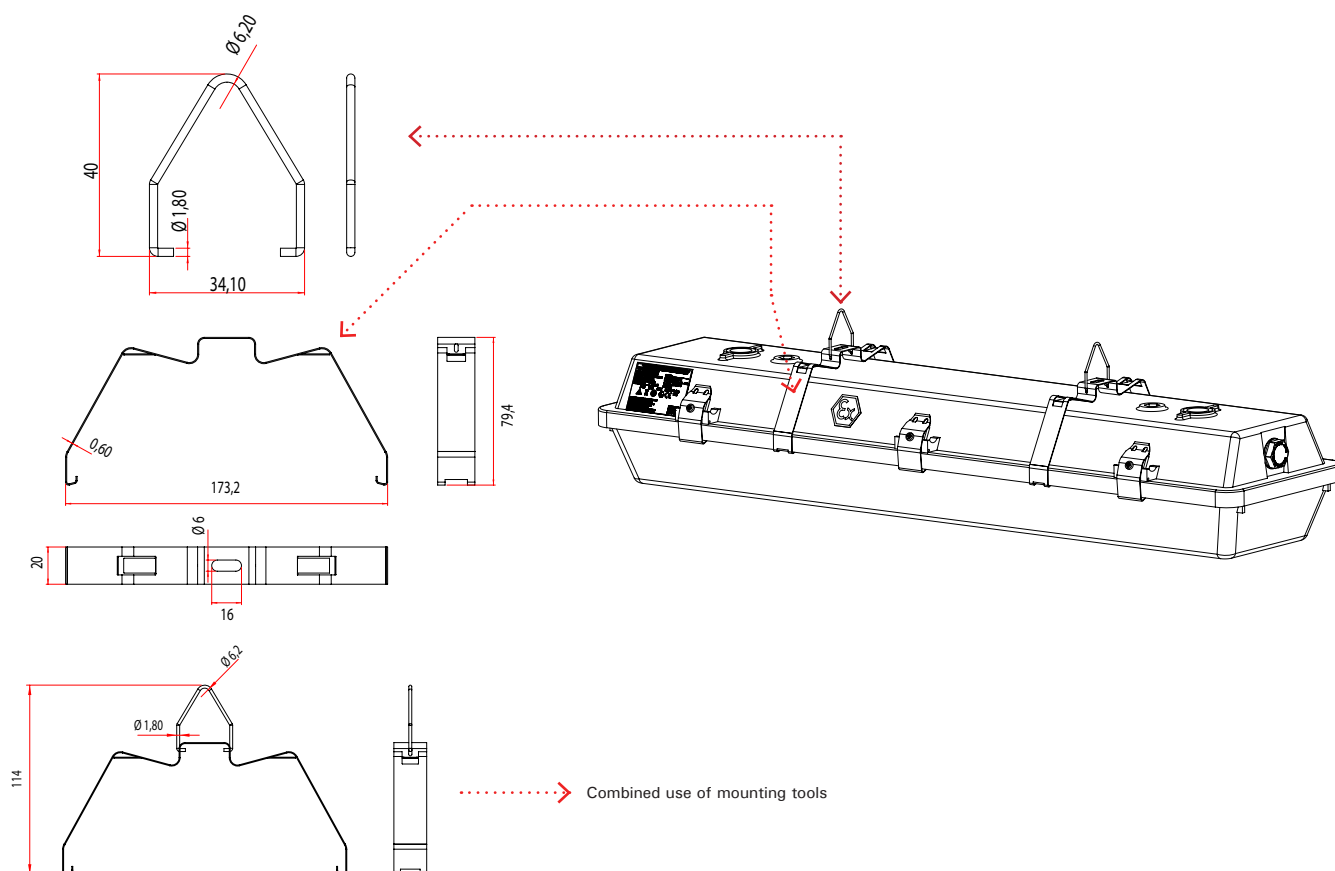


-20°C +50°C

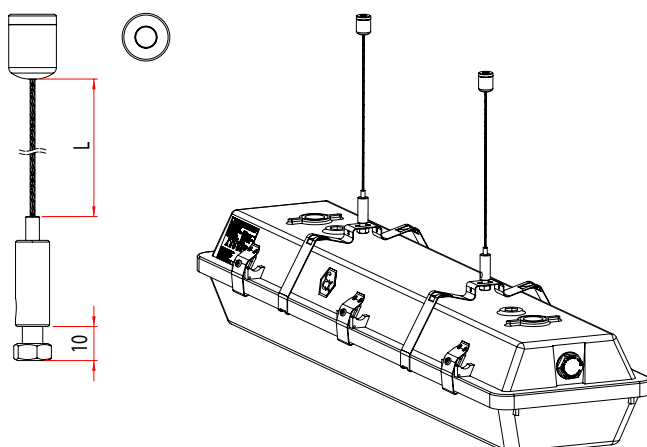


Mounting Tools

Fixed Use



Elevator Hanger Kit (50CM / 100CM / 150CM / 200CM)



| Order Code | M6X10 | L |
|------------|-------|-------|
| 3325607 | M6X10 | 50CM |
| 3325604 | M6X10 | 100CM |
| 3325605 | M6X10 | 150CM |
| 3325606 | M6X10 | 200CM |



Zone 2.22

II 3G Ex nR IIC T6 Gc
II 3D Ex tc IIIC T65°C Dc

EX-DUAL EXIT ZONE-2.21

The equipment is Explosion-proof Zone-2.21 LED Escape Sign Lighting Fixture. Type of protection “nR” for Explosive Gas Atmosphere Zone 2 and Type of protection “tb” for Explosive Dust Atmosphere Zone 21 have protection level. LEDs and driver are located in an IP66 protected enclosure. All cables, cable glands and terminal blocks are Ex certified. The size and appearance of each model is the same. Their main differences are product features.

Ex-proof Product Features

| | |
|-----------------------------------|--|
| Zone | : Zone 2.21 |
| Group / Category | : II / 3G / 2D |
| Protection Class | : nR / tb |
| Explosion Group | : IIC / IIIC |
| Maximum Surface Temperature Class | : T6 / T80°C |
| Certificate Code | : II 3G Ex nR IIC T6 Gc II 2D Ex tb IIIC T80°C Db |

Mechanical Features

| | |
|---------------------|---|
| Housing | : GRP Body (Glass reinforced polyester) |
| Diffuser | : Tempered Glass & Sticker |
| Sealing | : High Temperature Resistant Silicone Gasket |
| Gland (Inlet) | : 1 x M16 Plastic Ex |
| Gland (Outlet) | : 1 x M16 Plastic Ex |
| Screws and Bolts | : AISI 316 Stainless Steel |
| IP | : IP66 |
| IK Protection Class | : IK08 |

Electrical and Optical Properties

| | |
|--------------------|--|
| Light Source | : Mid Power Led |
| Consumption Power | : 6W |
| Lumen | : 107 lm |
| Input Voltage | : 220-240V (50-60 Hz) |
| Colour Temperature | : 2700K / 3000K / 4000K / 5000K / 5700K / 6500K |
| CRI | : ≥ 80 |
| Optic | : 120° |

Other Features

| | |
|------------------|---|
| Mounting Options | : Ceiling, Wall, Pipe, Cable Tray, Pendant |
| Housing Colour | : RAL 7047 (Grey) |

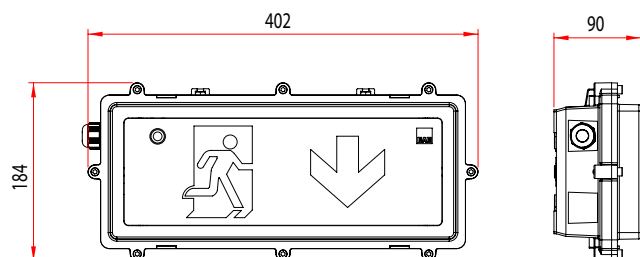
Options

| | |
|---------------|---|
| Grand Inlet | : M16, M20, M25, NPT 3/4 and Armored Glands |
| Gland Output | : M16, M20, M25, NPT 3/4 and Armored Glands |
| DALI | : Yes |
| Emergency Kit | : Yes (1-3 Hours), Activated by Power Outage |
| TRW | : Yes |

Dimensions

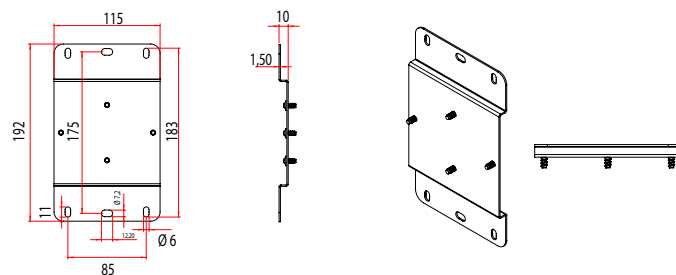
| | |
|--------|--------------|
| Width | : 90 mm |
| Length | : 402 mm |
| Height | : 184 mm |
| Weight | : 3 - 3.2 kg |

Technical Drawing (mm)



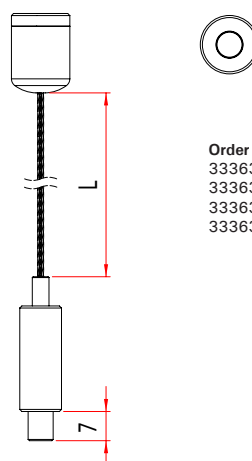


Wall Mount Hanger Kit



Order Code 332260

Elevator Hanger Kit



| Order Code | | L |
|------------|------|-------|
| 3336380 | M6X7 | 50CM |
| 3336383 | M6X7 | 100CM |
| 3336381 | M6X7 | 150CM |
| 3336382 | M6X7 | 200CM |

Technical drawing of a metal bracket with four views: front, side, top, and isometric. Dimensions are as follows:

- Front View:** Overall width 115, overall height 170.
- Side View:** Flange width 50, flange thickness 1.5.
- Top View:** Mounting hole diameter $\varnothing 11$, central hole diameter $\varnothing 9$, distance from front edge to mounting holes 35.5, distance between mounting holes 32, and distance from central hole to side edge 20.
- Isometric View:** Shows the 3D structure of the bracket.



II 3G Ex nR IIC T6 Gc
II 2D Ex tb IIIC T80°C Db

EX-DUAL ZONE-2.21

The equipment is Explosion-proof Zone-2.21 LED Luminaire. Type of protection “nR” for Explosive Gas Atmosphere Zone 2 and Type of protection “tb” for Explosive Dust Atmosphere Zone 21 have protection level. LEDs and driver are located in an IP66 protected enclosure. All cables, cable glands and terminal blocks are certified. The size and appearance of each model is the same. Their main differences are power and product features.

Ex-proof Product Features

| | |
|-----------------------------------|--|
| Zone | : Zone 2 / Zone 21 |
| Group / Category | : II / 3G / 2D |
| Protection Class | : nR / tb |
| Explosion Group | : IIC / IIIC |
| Maximum Surface Temperature Class | : T6 / T80°C |
| Certificate Code | : II 3G Ex nR IIC T6 Gc II 2D Ex tb IIIC T80°C Db |

Mechanical Features

| | |
|---------------------|---|
| Housing | : GRP Body (Glass reinforced polyester) |
| Diffuser | : Tempered Glass & PC Lens |
| Sealing | : High Temperature Resistant Silicone Gasket |
| Gland (Inlet) | : 1 x M16 Plastic Ex |
| Gland (Outlet) | : 1 x M16 Plastic Ex |
| Screws and Bolts | : AISI 316 Stainless Steel |
| IP | : IP66 |
| IK Protection Class | : IK08 |

Electrical and Optical Properties

| | |
|--------------------|--|
| Light Source | : Mid Power Led |
| Consumption Power | : 26W / 33W / 42W |
| Lumen | : 3414 lm / 4195 lm / 5276 lm |
| Input Voltage | : 220-240V (50-60 Hz) |
| Colour Temperature | : 2700K / 3000K / 4000K / 5000K / 5700K / 6500K |
| CRI | : ≥ 80 |
| Optic | : 18° / 23° / 30° / 46° / 60° / 90° |

Other Features

| | |
|------------------|---|
| Mounting Options | : Ceiling, Wall, Pipe, Cable Tray, Pendant |
| Housing Colour | : RAL 7047 (Grey) |

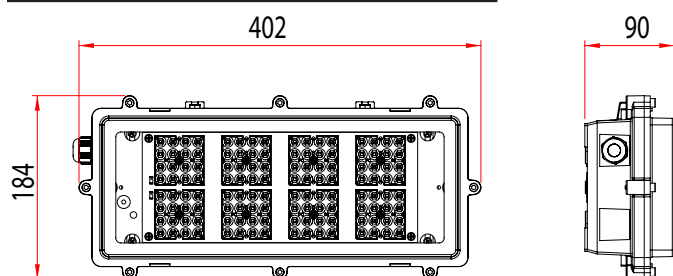
Options

| | |
|---------------|-------------------|
| Emergency Kit | : Yes (1-3 Hours) |
| DALI | : Yes |
| TRW | : Yes |

Dimensions

| | |
|--------|--------------|
| Width | : 90 mm |
| Length | : 402 mm |
| Height | : 184 mm |
| Weight | : 3 - 3.2 Kg |

Technical Drawing (mm)

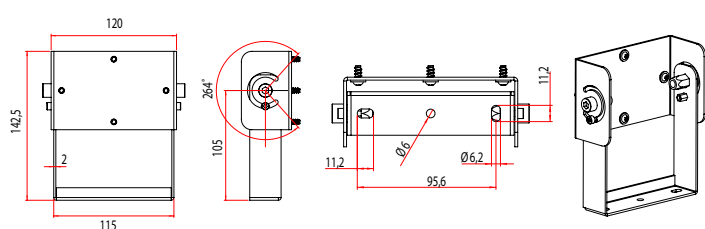


-20°C +55°C



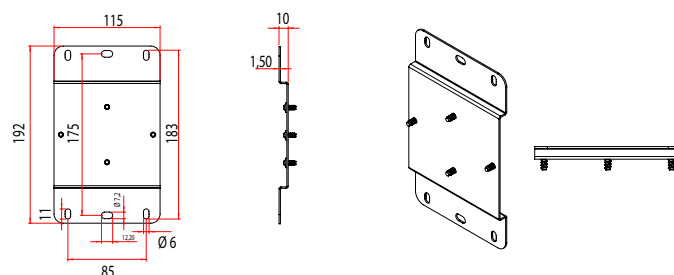
Mounting Tools

Angled Hanger Set



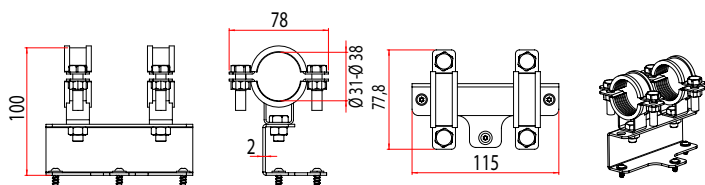
Order Code 3322256

Wall Mount Hanger Kit



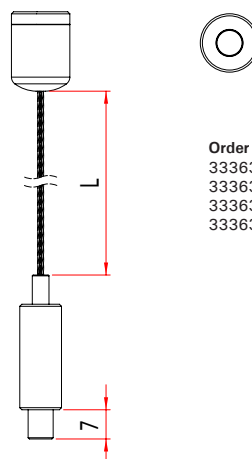
Order Code 3322260

Ø31 - Ø38 Pipe Installation



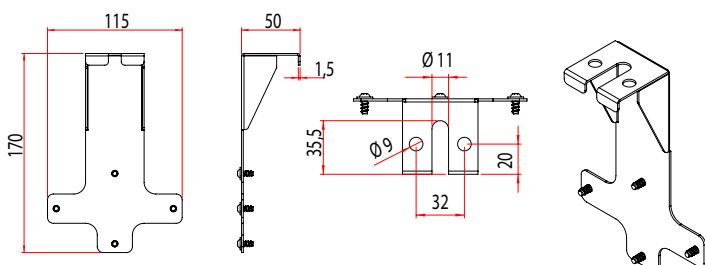
Order Code 3322258

Elevator Hanger Set



| Order Code | | L |
|------------|------|-------|
| 3336380 | M6X7 | 50CM |
| 3336383 | M6X7 | 100CM |
| 3336381 | M6X7 | 150CM |
| 3336382 | M6X7 | 200CM |

Cable Tray and Ceiling Suspension Set



Order Code 3322261



Zone 2.21 / 2.22

II 3G Ex nR IIC T6 Gc
II 2D Ex tb IIIC T80°C Db

LINEX ZONE-2.21

The equipment is Explosion-proof Zone-2.21 LED Luminaire. Type of protection "ec" for Explosive Gas Atmosphere Zone 2 and Type of protection "tb" for Explosive Dust Atmosphere Zone 21 have protection level. LEDs and driver are located in an IP66 protected enclosure. All cables, cable glands and terminal blocks are certified. The appearance of each model is the same. Their main differences are length, power and product features.

Ex-proof Product Features

| | |
|-----------------------------------|--|
| Zone | : Zone 2 / Zone 21 |
| Group / Category | : II / 3G / 2D |
| Protection Class | : ec / tb |
| Explosion Group | : IIC / IIIC |
| Maximum Surface Temperature Class | : T6 / T85°C |
| Certificate Code | : II 3G Ex ec IIC T6 Gc II 2D Ex tb IIIC T85°C Db |

Mechanical Features

| | |
|---------------------|--|
| Housing | : Aluminum Extrusion Body |
| Diffuser | : PC Opal Diffuser |
| Sealing | : High Temperature Resistant Silicone Gasket |
| Gland (Inlet) | : 1 x M20 Plastic Ex |
| Gland (Outlet) | : 1 x M20 Plastic Ex |
| Screws and Bolts | : AISI 316 Stainless Steel |
| IP | : IP66 |
| IK Protection Class | : IK07 |

Electrical and Optical Properties

| | |
|--------------------|--|
| Light Source | : LED |
| Consumption Power | : 25W / 30W / 34W / 40W / 56W / 64W / 73W / 79W |
| Lumen | : 3267 lm / 3945 lm / 4453 lm / 5277 lm / 7417 lm / 8340 lm / 9443 lm / 10328 lm |
| Input Voltage | : 220-240V (50-60 Hz) |
| Colour Temperature | : 2700K / 3000K / 4000K / 5000K / 5700K / 6500K |
| CRI | : ≥ 80 |
| Optic | : 120° |

Other Features

| | |
|------------------|-------------------------|
| Mounting Options | : Surface Mount |
| Housing Colour | : RAL 9016 (Grey White) |

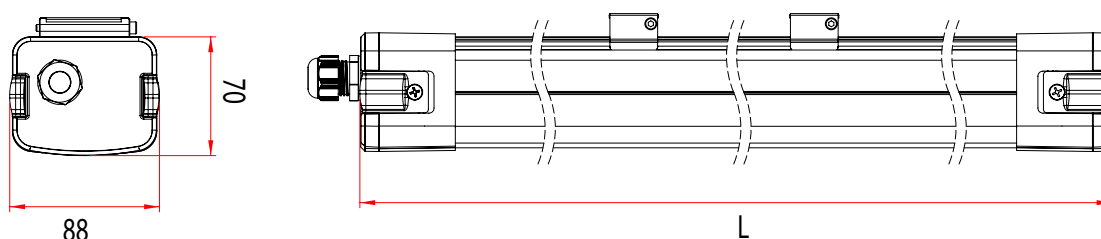
Options

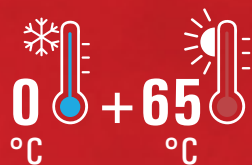
| | |
|---------------|----------------------|
| Rakor | : M20 Armored Glands |
| Emergency Kit | : Yes (1-3 Hours) |
| DALI | : Yes |
| TRW | : Yes |

Dimensions

| | |
|------------|---------------------|
| Width | : 88 mm |
| Length (L) | : 1200 mm / 1500 mm |
| Height | : 70 mm |
| Weight | : 1,9 - 2,5 kg |

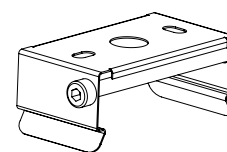
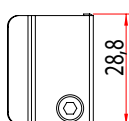
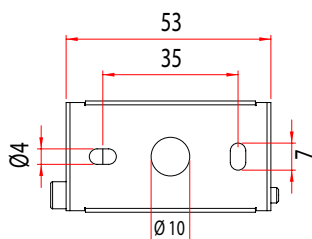
Technical Drawing (mm)



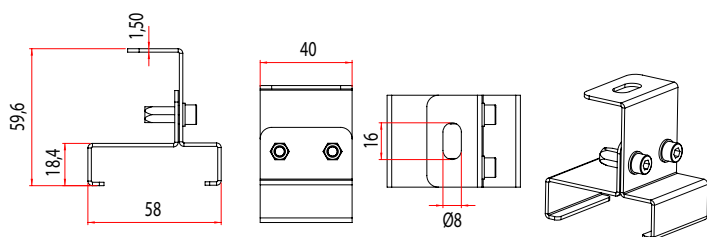


Mounting Tools

Hanger Spring (Comes with Product)

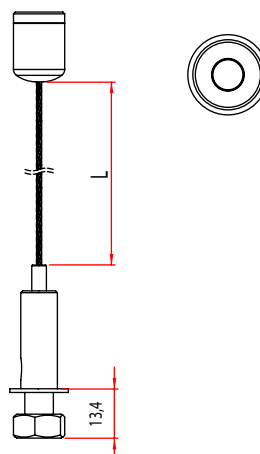


Fixed Hanger Set



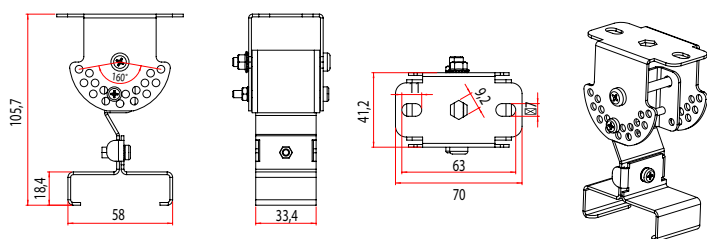
Order Code 3339935

Elevator Hanger Kit



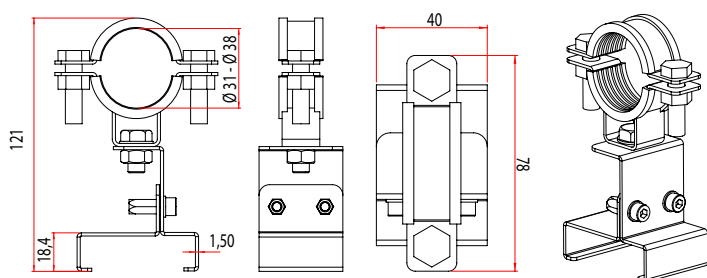
| Order Code | M8X13,5 | L |
|------------|---------|-------|
| 3142319 | M8X13,5 | 50CM |
| 3142320 | M8X13,5 | 100CM |
| 3142321 | M8X13,5 | 150CM |
| 3142322 | M8X13,5 | 200CM |
| 3142323 | M8X13,5 | 300CM |
| 3142324 | M8X13,5 | 500CM |

Angled Hanger Set



Order Code 3330579

Ø31 - Ø38 Pipe Installation



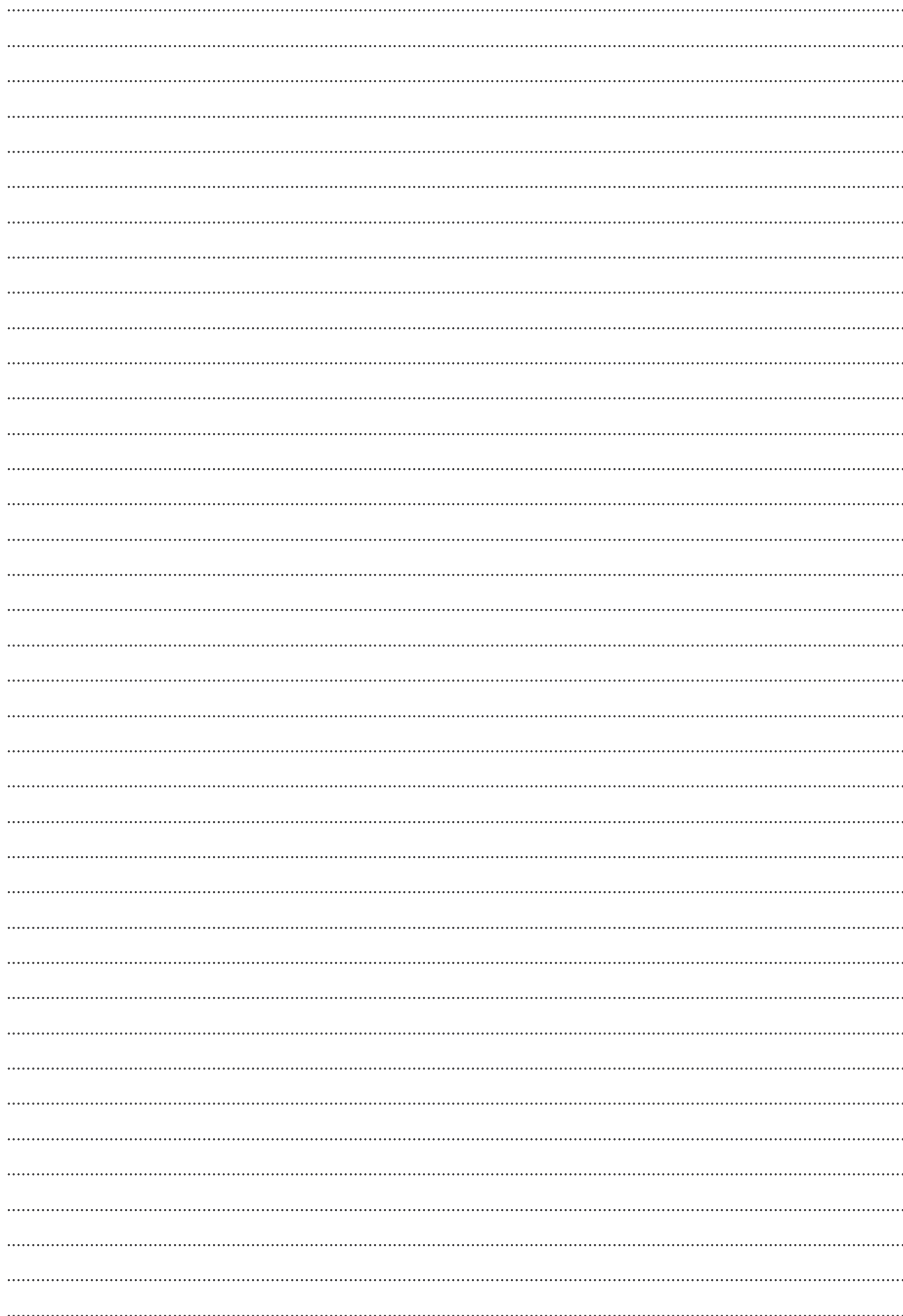
Order Code 3339933



Zone 2.21 / 2.22

II 3G Ex ec IIC T6 Gc

II 2D Ex tb IIIC T85°C Db







EAE LIGHTING Ex-Proof Lighting Products Catalog (English) - Updated: 18.05.2025
EAE Lighting reserves the right to make changes deemed necessary without prior notice.
Please contact us for more information about the products and details in the catalog.



EAE Lighting
İkitelli OSB Mah. Eski Turgut Özal Cad.
EAE No: 20, İç Kapı No: Giriş Kat
Başakşehir / İSTANBUL - TÜRKİYE
Phone : +90 212 413 21 00 (pbx)
Fax : +90 212 549 37 90
www.eaelighting.com



engineering the light